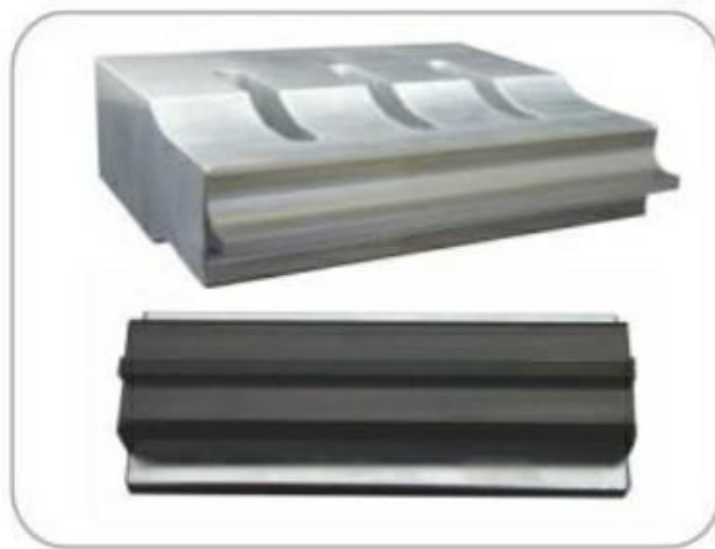


UTS-003

# 横推式超声波封尾机

HORIZONTAL TYPE ULTRASONIC TUBE SEALING MACHINE



本机熔接模具  
Welding Horn



本机杯座（根据软管尺寸定做）  
Tube holder  
(Custom made according to tube's size)



软管样品  
Tube Sample



#### 性能与特点:

- ★ 本机采用超声波技术封口、封口效果稳定持久；封口处纹路清晰、不变形、不爆管；
- ★ 手工落管、机器自动感应自动封口及切尾，操作方便快捷；
- ★ 自主研发数字化超声波自动变频电箱，无需人工调整频率，增加功率自动补偿功能，不会因使用时间长而使导致机器功率下降，可根据软管材质及尺寸自由调节功率，出力稳定，故障率极低，使用寿命比普通电箱更长；
- ★ 采用 PLC 触摸屏控制，操作方便；
- ★ 整机用 304 不锈钢精制而成，耐酸性，耐腐蚀；
- ★ 适用于连排管、单管、波浪形或圆弧形等异型软管封尾；
- ★ 配置自动感应系统，无管，不封尾不切边，降低机器及模具损耗率。

#### Features:

- ★ Adopts ultrasonic sealing technology, no need warm up time, more stable and neat sealing, no distortion and low reject rate less than 1%.
- ★ Manually feed the tube, machine could automatically start sealing and end trimming.
- ★ Independent R&D for digital ultrasonic automatic tracking electrical control box, no need manual adjust the frequency, with power auto compensation function, avoiding the reduction of power after long time use. Could freely adjust the power based on tube material and size, stable and minimum the fault rate, extend the life span than the normal electrical box.
- ★ PLC with touch screen control system, providing friendly operation experience.
- ★ Made of 304 stainless Steel, acid and alkali resistance, corrosion resistance.
- ★ Suitable for strip tube, normal tube, curved tube or customer-made shape tube sealing and trimming.
- ★ No tube, no sealing and trimming function, reducing the machine and mould loss.

#### 适用范围:

食品、医药、化妆品、化工等行业的各种塑料软管或铝塑管封尾。

#### Application:

Widely used for food, pharmaceutical, cosmetics, chemical and other plastic, PE, aluminum laminated tube filling and sealing.

可选配置：部分软管可选配打码功能

**Machine Options:** Date coding function (for some kind of the tubes)

### 主要技术参数 MAIN TECHNICAL PARAMETERS

型号	Model	VK-UTS-003
频率	Frequency	20kHz
功率	Power	2600W
电压	Power Supply	AC220V/110V 1PH 50/60Hz
封口直径	Sealing Dia.	10-50mm
软管高度	Tube Height	50-120mm
产能	Capacity	8-12pcs/min
工作气压	Air Pressure	0.5-0.6MPa
机器尺寸	Dimension	L560*W537*880mm
净重	N.W	105kgs